

# What the HAB is that?



A Shellfish Aquaculturist's Guide to Understanding Harmful Algal Blooms in Lower Chesapeake Bay

## Bloom Basics



HABs occur when tiny, photosynthetic cells grow out of control and cause harm



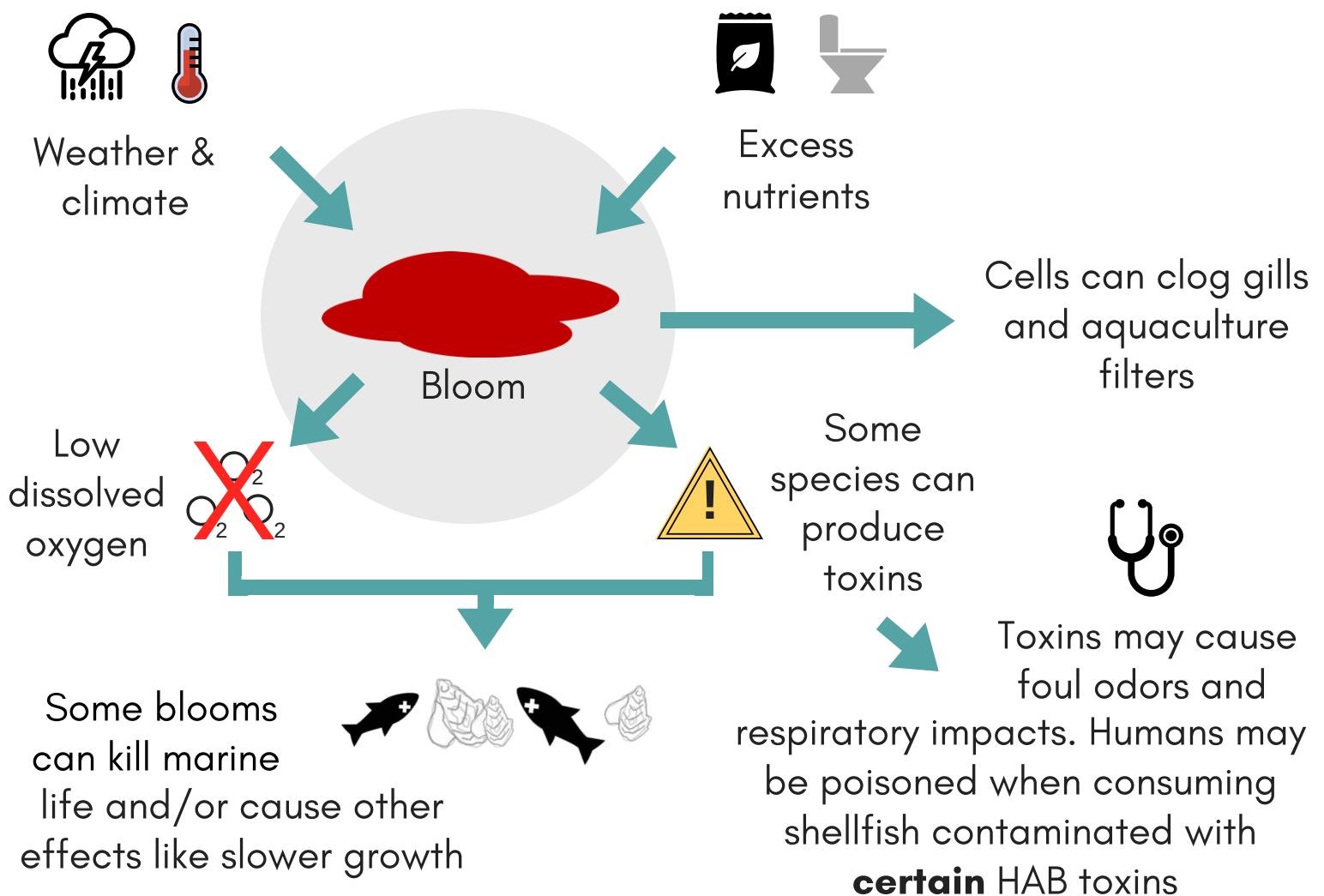
Avoid planting and harvesting shellfish during blooms as a precautionary measure



**No** reported HAB-related human illnesses from eating shellfish grown in the Bay (Jan 2018)

## Causes & Effects

Filters are not 100% effective against HAB toxins



## Who Ya Gonna Call?

For more information or to report HAB sightings, impacts, and/or health concerns...

**HAB Hotline:** 1-888-238-6154

**Virginia Dept. of Health:** [www.HarmfulAlgaeVA.com](http://www.HarmfulAlgaeVA.com)

**Virginia Institute of Marine Science:**

[www.vims.edu/bayinfo/habs](http://www.vims.edu/bayinfo/habs)



# What the HAB is that?



A Shellfish Aquaculturist's Guide to Identifying Harmful Algal Blooms in Lower Chesapeake Bay

## Common Bloom-Formers...

Spring	Summer	Fall	Winter	Algal Species	Toxin	Potential Impacts?
				Diatoms; <i>Heterocapsa</i> <i>spp.</i>		
				<i>Pseudo-nitzschia</i> <i>spp.</i>		
				<i>Dinophysis</i> <i>spp.</i>		
				<i>Karlodinium</i> <i>veneficum</i>		
				<i>Prorocentrum</i> <i>spp.</i>		
				Raphidophytes, e.g. <i>Chattonella</i>		
				<i>Margelefidinium</i> ( <i>Cochlodinium</i> ) <i>polykrikoides</i>		
				<i>Alexandrium</i> <i>monilatum</i>		

### Symbols defined:

- Species produces toxins in the Bay
  - Species produces toxins in other areas, but these toxins have not yet been identified in the Bay
  - Species may produce toxins in the Bay
  - Species has health impacts on humans in other areas, but so far no impacts have been reported in the Bay region
  - Species may harm Bay shellfish
- Info last updated 1/2018



## Track Blooms in My Area

Visit the Algal Surveillance Map to see if a bloom is happening in your area...

### Virginia Dept. of Health:

[www.vdh.virginia.gov/environmental-epidemiology/harmful-algal-blooms-habs/algal-bloom-surveillance-map](http://www.vdh.virginia.gov/environmental-epidemiology/harmful-algal-blooms-habs/algal-bloom-surveillance-map)

